

WE ARE READY to Respond

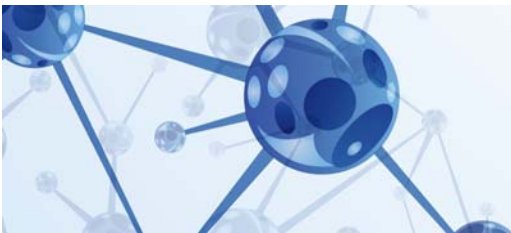
_____ cares about you and your loved ones. We respect your role in responding to an emergency and appreciate the commitment to serve our communities in times of crisis.

In partnership with the Cities Readiness Initiative (CRI), _____ has developed a plan to protect you and your loved ones in the event of a public health emergency involving exposure to anthrax, tularemia or the plague. Exposure to any one of these diseases, without treatment could result in an extremely high mortality rate.

This plan provides for mass antibiotic distribution centers also known as Point Of Distribution centers or PODs. These PODs will be set up to provide medication for _____ employees and their loved ones. Our goal is to provide you with timely access to medication and ongoing communication about the emergency.

In the event of a declared public health emergency:

- These PODs will be for _____ employees and their loved ones.
- These PODs will not be open to the general population.
- There will be enough medication for everyone.
- In the event of a declared health emergency, you will receive further information and instructions.



WE ARE READY to Respond

_____ cares about you and your loved ones. We respect your role in responding to an emergency and appreciate the commitment to serve our communities in times of crisis.

In partnership with the Cities Readiness Initiative (CRI), _____ has developed a plan to protect you and your loved ones in the event of a public health emergency involving exposure to anthrax, tularemia or the plague. Exposure to any one of these diseases, without treatment could result in an extremely high mortality rate.

This plan provides for mass antibiotic distribution centers also known as Point Of Distribution centers or PODs. These PODs will be set up to provide medication for _____ employees and their loved ones. Our goal is to provide you with timely access to medication and ongoing communication about the emergency.

In the event of a declared public health emergency:

- These PODs will be for _____ employees and their loved ones.
- These PODs will not be open to the general population.
- There will be enough medication for everyone.
- In the event of a declared health emergency, you will receive further information and instructions.

WE ALL HAVE a Role...

to help our communities during a disaster. We depend on our employees to provide for their families and then report to work. Employee duties during an emergency may not resemble the job that you normally do. Employees will be engaged in a variety of ways to meet the most urgent requirements of the response. In order to do this, we need all of our employees to be prepared for any emergency.

Are you prepared to come to work during an emergency that may impact your family and friends? Do you have plans to:

- Evacuate your home?
- Provide a safe secure environment for your family?
- Meet up with your family if you are not together when the emergency begins?
- Contact your relatives and loved ones?

The Preparing Together Discussion Guide can be found at:
www.crinorthwest.org/preptalk.html

To find information during an emergency:

- www.publicalerts.org – sign up in advance to receive alerts in the event of a disaster
- www.flashalert.net – sign up in advance to receive alerts in the event of a disaster
- Contact your supervisor or other co-workers

*Remember that the more prepared you are personally,
the more resilient _____ is.*

WE ALL HAVE a Role...

to help our communities during a disaster. We depend on our employees to provide for their families and then report to work. Employee duties during an emergency may not resemble the job that you normally do. Employees will be engaged in a variety of ways to meet the most urgent requirements of the response. In order to do this, we need all of our employees to be prepared for any emergency.

Are you prepared to come to work during an emergency that may impact your family and friends? Do you have plans to:

- Evacuate your home?
- Provide a safe secure environment for your family?
- Meet up with your family if you are not together when the emergency begins?
- Contact your relatives and loved ones?

The Preparing Together Discussion Guide can be found at:
www.crinorthwest.org/preptalk.html

To find information during an emergency:

- www.publicalerts.org – sign up in advance to receive alerts in the event of a disaster
- www.flashalert.net – sign up in advance to receive alerts in the event of a disaster
- Contact your supervisor or other co-workers

*Remember that the more prepared you are personally,
the more resilient _____ is.*