

# WE ARE READY to Respond

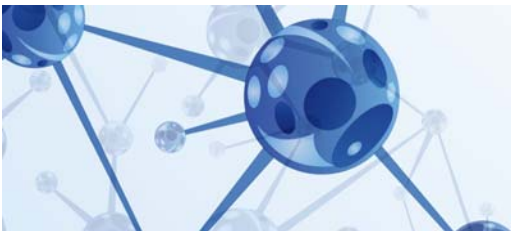
\_\_\_\_\_ cares about you and your loved ones. We respect your role in responding to an emergency and appreciate the commitment to serve our communities in times of crisis.

In partnership with the Cities Readiness Initiative (CRI), \_\_\_\_\_ has developed a plan to protect you and your loved ones in the event of a public health emergency involving exposure to anthrax, tularemia or the plague. Exposure to any one of these diseases, without treatment could result in an extremely high mortality rate.

This plan provides for mass antibiotic distribution centers also known as Point Of Distribution centers or PODs. These PODs will be set up to provide medication for \_\_\_\_\_ employees and their loved ones. Our goal is to provide you with timely access to medication and ongoing communication about the emergency.

**In the event of a declared public health emergency:**

- These PODs will be for \_\_\_\_\_ employees and their loved ones.
- These PODs will not be open to the general population.
- There will be enough medication for everyone.
- In the event of a declared health emergency, you will receive further information and instructions.



# WE ARE READY to Respond

\_\_\_\_\_ cares about you and your loved ones. We respect your role in responding to an emergency and appreciate the commitment to serve our communities in times of crisis.

In partnership with the Cities Readiness Initiative (CRI), \_\_\_\_\_ has developed a plan to protect you and your loved ones in the event of a public health emergency involving exposure to anthrax, tularemia or the plague. Exposure to any one of these diseases, without treatment could result in an extremely high mortality rate.

This plan provides for mass antibiotic distribution centers also known as Point Of Distribution centers or PODs. These PODs will be set up to provide medication for \_\_\_\_\_ employees and their loved ones. Our goal is to provide you with timely access to medication and ongoing communication about the emergency.

**In the event of a declared public health emergency:**

- These PODs will be for \_\_\_\_\_ employees and their loved ones.
- These PODs will not be open to the general population.
- There will be enough medication for everyone.
- In the event of a declared health emergency, you will receive further information and instructions.